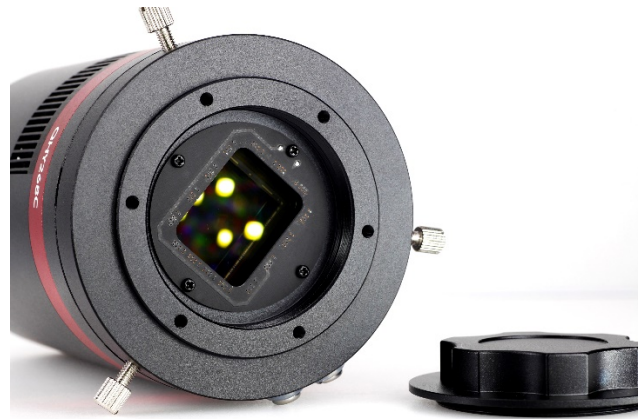




**APS-C Format  
Cooled CMOS Cameras  
QHY247C QHY268C  
QHY268M**



Model	QHY247C	QHY268C	QHY268M
Sensor	Sony IMX193	Sony IMX571	Sony IMX571
Illumination	Front Illuminated	Back Illuminated	Back Illuminated
Total Pixels	24 Megapixels	26 Megapixels	26 Megapixels
Pixel Size	3.91um	3.76um	3.76um
Pixel Array	6024 x 4024	6280 x 4210	6280 x 4210
Optical Format	APS-C	APS-C	APS-C
Dark Current	0.0012e/p/s @ -15C	0.0005e/p/s @ -20C	0.0005e/p/s @ -20C
FPS @ Full Resolution	3 FPS	6 FPS	6 FPS
Shutter	Electronic	Electronic	Electronic
A/D Resolution	14-bit	16-bit	16-bit
Read Noise	1e- to 2.7e-	1.1e- to 3.5e-	1.1e- to 3.5e-
Full Well	36ke-	51 - 75ke-	51 - 75ke-
Exposure	50us - 3600sec	30us - 3600se	30us - 3600se
Cooling Delta	-35C, Regulated	-30 to -35C Regulated	-30 to -35C Regulated
Weight (M/C)	699g	855g/755g	855g/755g
Reference Price (M/C)	\$1399	\$2099	\$2399

Specifications and prices subject to change without notice. For latest product information and updates visit:

[www.QHYCCD.com](http://www.QHYCCD.com)